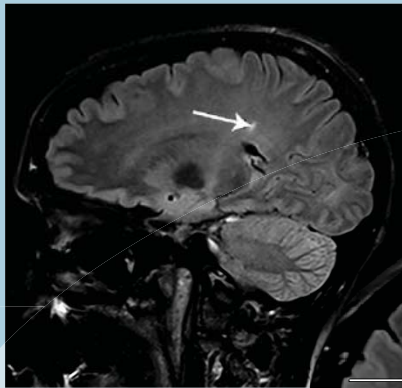
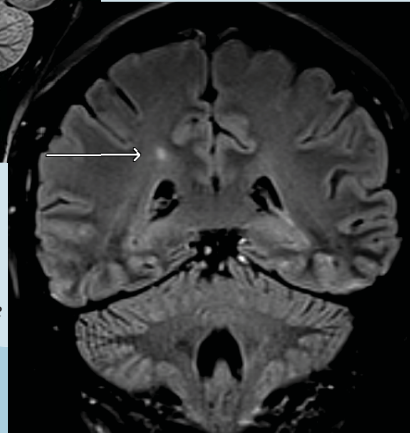


# MS IMAGING

Big Sky Diagnostic Imaging of Billings is pleased to offer high quality Magnetic Resonance Imaging (MRI) for Multiple Sclerosis (MS) plaques. Big Sky uses a 3.0 Tesla system, offering the highest resolution clinically available.



Small MS Plaque  
Sagittal FLAIR



Small MS Plaque  
Coronal FLAIR

## Corresponding Plaques

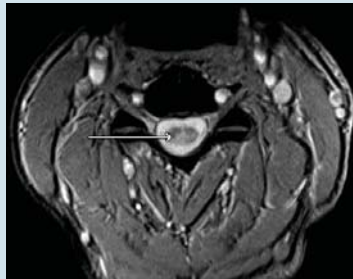
## BENEFITS

- 3.0 Tesla MRI, offering optimal resolution and detail
- The area's only 3.0T Ultra-High-Field MRI system
- 3.0T may see small plaques that other MRI's might miss
- Advanced scanning protocols to increase contrast ratio
- Highly experienced MRI technologists
- Imaging center chosen for MS research studies
- Comfortable outpatient environment
- Local radiologists read all studies

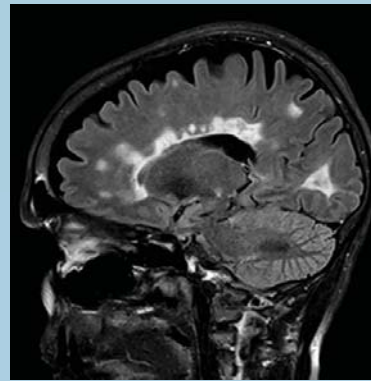


Cervical Spine  
Sagittal STIR

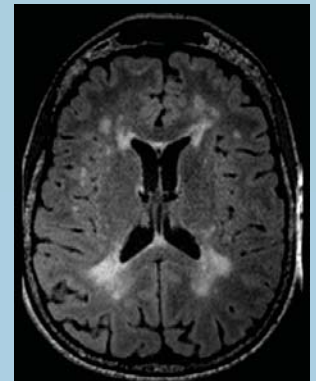
## Cervical Spine Plaques



Cervical Spine  
Axial FLASH



Progressive MS Plaques  
Sagittal FLAIR



Progressive MS Plaques  
Axial FLAIR

## WHY BIG SKY DIAGNOSTIC IMAGING?

Our commitment to Superiority exists throughout the entirety of the clinic. Our Superior Technology is on the cutting edge of diagnostic medicine. Our equipment includes a 3.0 Tesla MRI scanner and a Dual Source CT scanner. We have Superior Service including quick report turnarounds, immediate access to images through our PACS system, and flexible scheduling. We treat patients with Superior Care, making them feel like they are family with our comfortable amenities and empathetic staff.

*Big Sky*

DIAGNOSTIC IMAGING  
OF BILLINGS

2900 12th Ave. N, Suite 3E  
Billings, MT 59101  
phone: 406.237.5525  
fax: 406.237.5530

*S*<sup>3</sup>  
SUPERIOR TECHNOLOGY  
SUPERIOR SERVICE  
SUPERIOR CARE

WWW.BIGSKYDIAGNOSTICIMAGING.COM